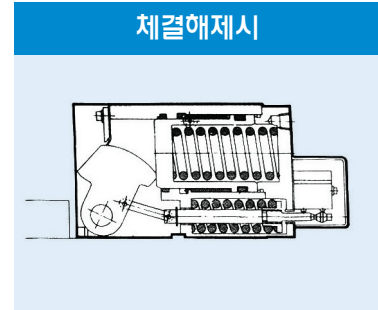
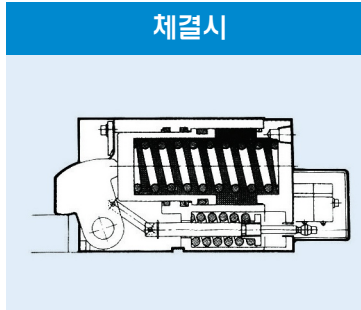
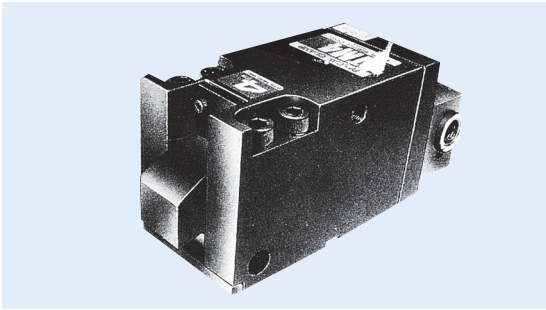


# AUTO-CLAMP

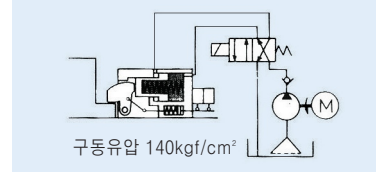
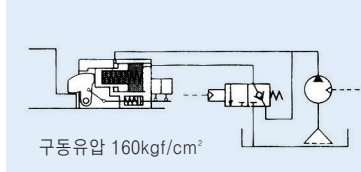
# MODEL TM



### 특징

- 강력한 클램프 능력이 있습니다.
- 제로유압시에도 강력한 보지력을 유지하며 사출기 용도에 맞게 개발한 것입니다.

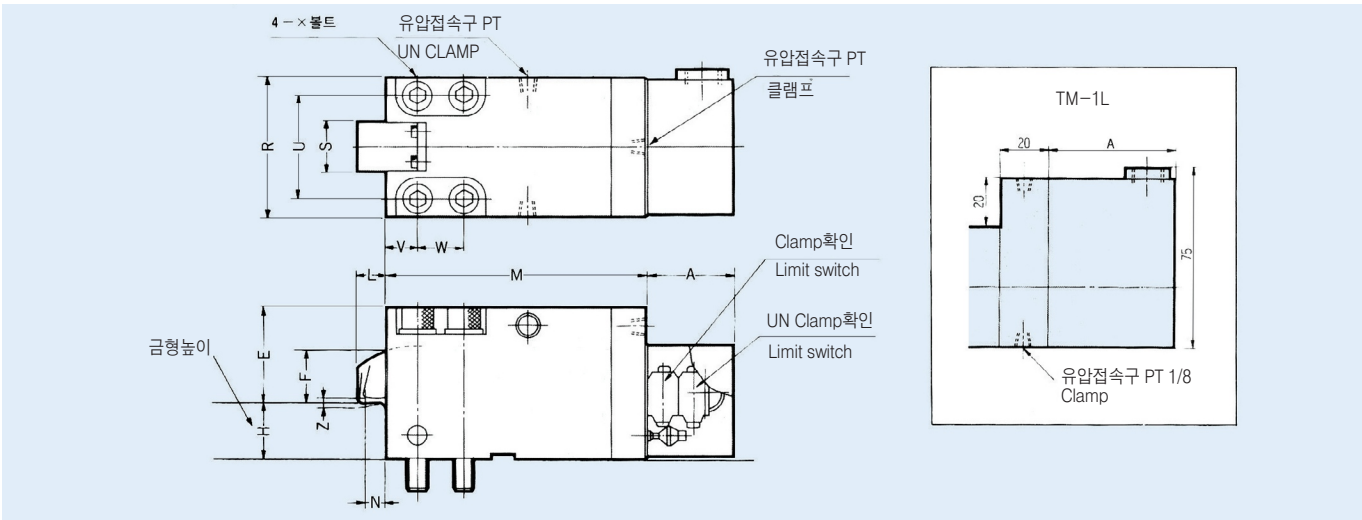
### 외로도



### 형식 및 사양

형식		TM1L	TM2.5L	TM4L	TM6L	TM10L	TM16L
체결력 (ton)	유압 140kgf/cm <sup>2</sup> 시	1	2.5	4	6	10	16
보지력 (ton)	유압 0kgf/cm <sup>2</sup> 시	0.05	0.1	0.16	0.25	0.4	0.6
전스트로크 (mm)		3.5	4	4	4	4.5	4.5
클램프스트로크(행정) (mm)		2	2	2	2	2	2
안전스트로크 (mm)		1.5	2	2	2	2.5	2.5
UN CLAMP 압 (Kgf/cm <sup>2</sup> )		30	30	30	30	30	30
유량	CLAMP (mm)	15	41	92	163	298	520
	UN CLAMP (mm)	6	11	28	48	87	143

### 형상 및 치수



형식	E	F	L	M	N	R	S	U	V	W	Z	X	H	A	B	C	D	PT
TM 1 L	42	21	11	118	9	52	18	38	12	18	1.5	M 8	MIN.20	50	59	9	21.5	1/8
TM 2.5 L	56	30	16	145	12	78	27	58	17	22	2	M10	MIN.30	50	78	15	10	1/4
TM 4 L	76	39	19	177	14.5	88	35	68	20	26	2	M12	MIN.30	50	93.5	15	15	1/4
TM 6 L	90	43	21	197	15	108	45	84	22	30	2	M14	MIN.35	50	99	24	16	1/4
TM 10 L	112	57	25	238.5	19	135	55	106	30	36	2.5	M18	MIN.40	55	121	30.5	25	3/8
TM 16 L	137	78	32	285	20	182	72	135	40	50	2.5	M24	MIN.40	62	156.5	38.5	77	3/8